

Course Schedule

11:00-12:00 Networking and TOTA Trinity North District Membership Drive with Catered Lunch

12:00-1:00- Brachial Plexus

1:00-2:00- Shoulder Musculature & Related Pathologies

2:00-2:15- BREAK

2:15-3:15- Elbow/Forearm Musculature & Related Pathologies

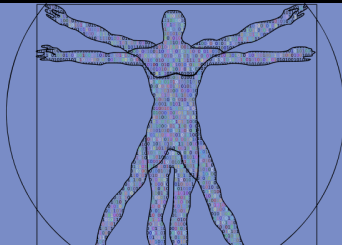
3:15-3:45- Wrist & Hand Musculature

3:45-4:00- BREAK

4:00-5:00- Wrist & Hand Continued

5:00-5:30- Wrist & Hand Pathologies

5:50-6:00 Q & A and Wrap Up



Course Objectives

Participants will:

Identify the parts of the:

- Brachial Plexus and functions
- Origin, insertion, action, and innervation of the rotator cuff muscles
- Origin, insertion, action, and innervation of the elbow musculature
- Origin, insertion, action, and innervation of the wrist and hand muscles

Distinguish between Common Pathologies of:

- The shoulder complex
- The elbow and forearm
- The wrist and hand

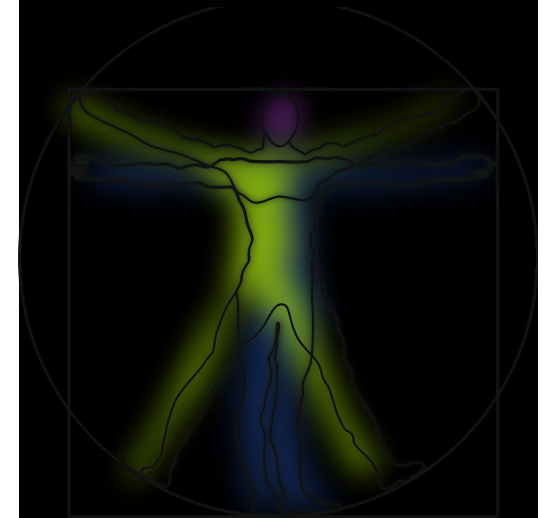
CEU's Offered: 5.5

The University of St. Augustine
5010 Riverside Drive, Bldg 4, Ste 120

Phone: 940-366-6779

E-mail: lsellmann@usa.edu

Upper Extremity Anatomy Review for the OT Practitioner



Texas Occupational Therapy
Association

Trinity North District

October 15, 2022